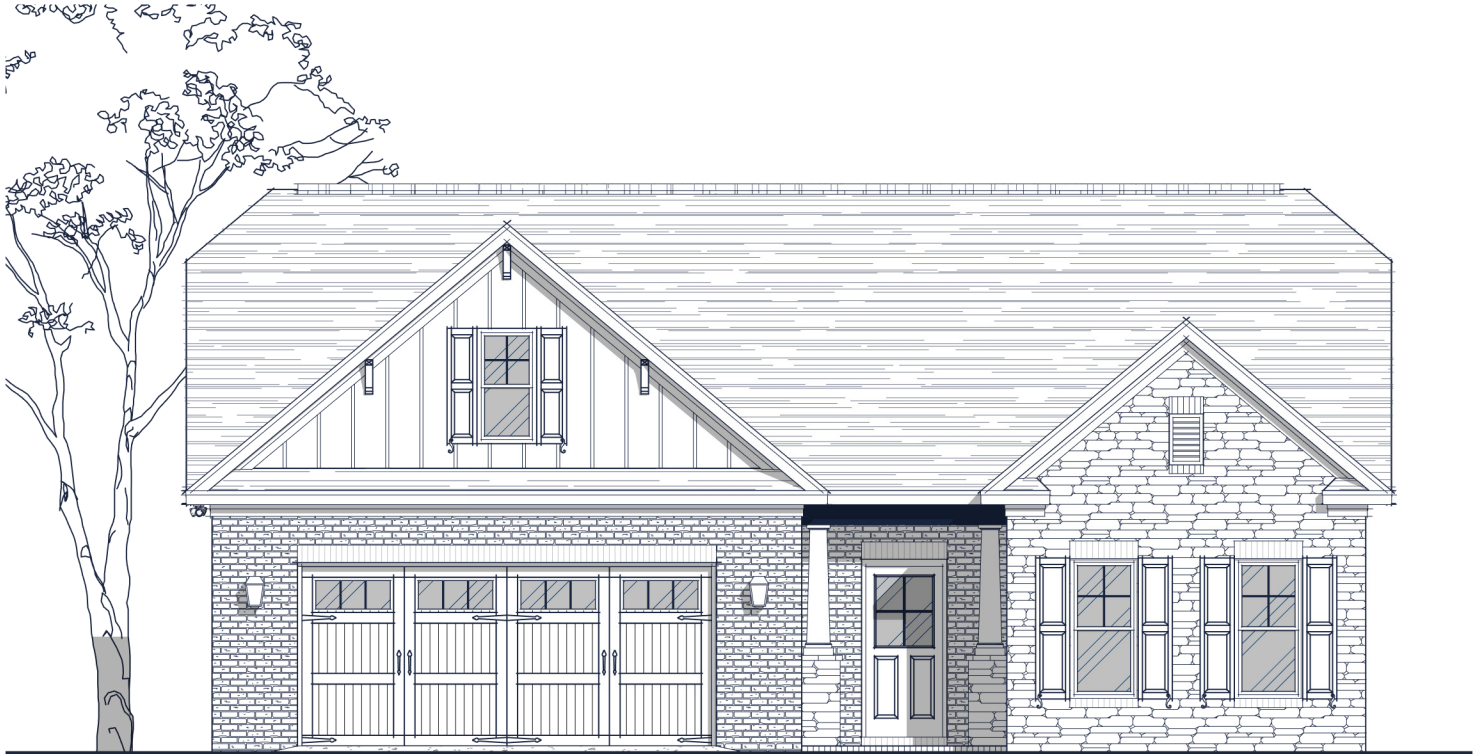




ISENHOUR
HOMES

FLOOR PLAN: BARRINGTON TRANSITIONAL



Specs:

Bedrooms: 3
 Bathrooms: 2
 Square Footage: 2,241 Sq.Ft.
 First Level: 1,765 Sq.Ft.
 Second Level: 476 Sq.Ft.
 Width: 45'-0"
 Depth: 56'-4"

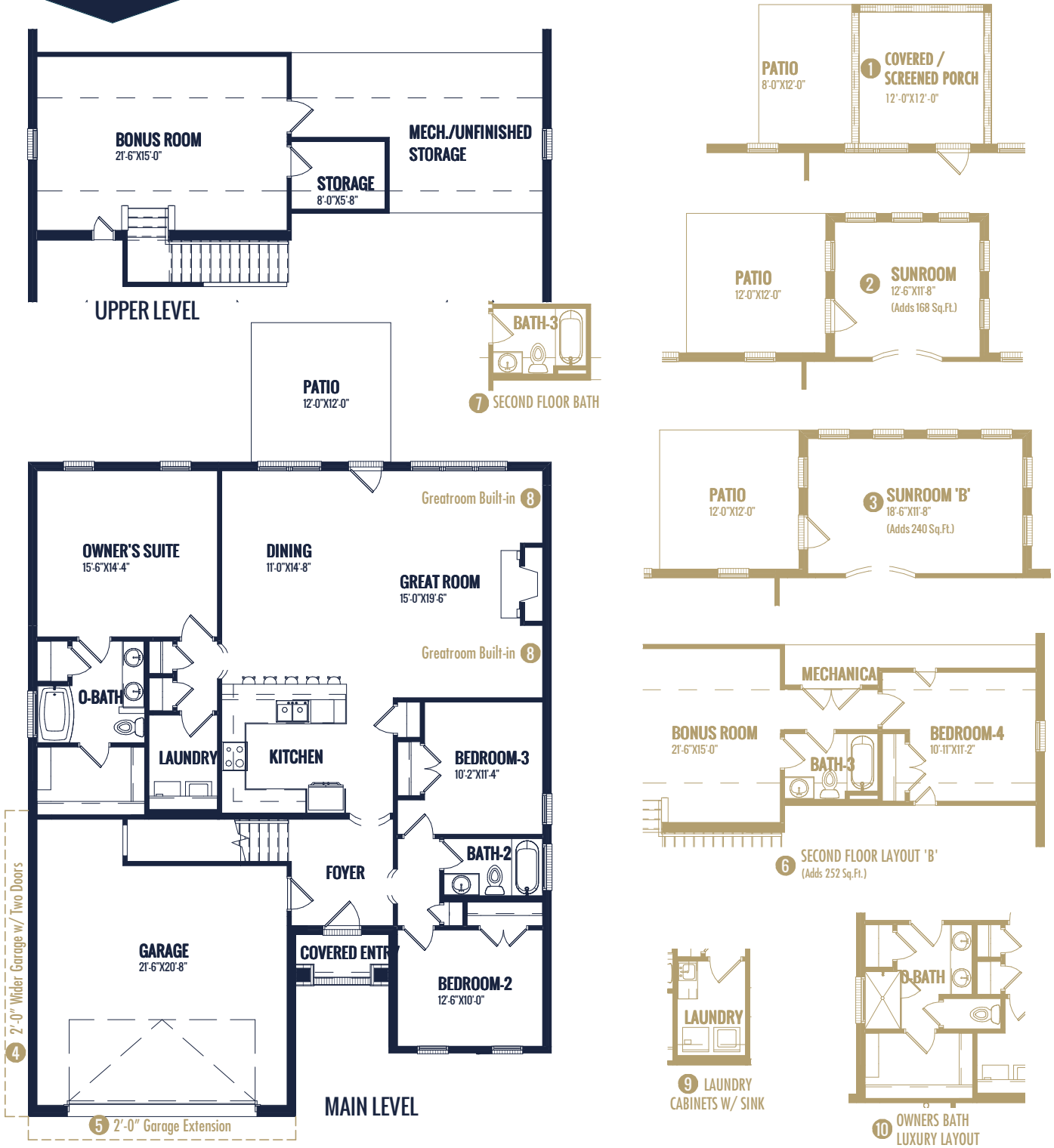
Options Shown:

- 1 Covered / Screened in Porch
- 2 Sunroom (Adds 168 Sq.Ft.)
- 3 Sunroom 'B' (Adds 240 Sq. Ft.)
- 4 2'-0" Wider Garage w/ Two Doors
- 5 2'-0" Garage Extension
- 6 Second Floor Layout 'B' (Adds 252 Sq. Ft.)
- 7 Second Floor Bath
- 8 Greatroom Built-in
- 9 Laundry Cabinets w/ Sink
- 10 Owners Bath Luxury Layout

Watercolors, illustrations, and floor plans are for marketing purposes only and are subject to change at builder's discretion. Square footage is outside veneer and should be independently verified. This is not a legal document.
 6/10/2022 9:41:34 AM



FLOOR PLAN: BARRINGTON TRANSITIONAL



Watercolors, illustrations, and floor plans are for marketing purposes only and are subject to change at builder's discretion. Square footage is outside veneer and should be independently verified. This is not a legal document. 6/10/2022 9:41:36 AM